

# Back To Alaska

Volume 1, Issue 1

Spring 2007

## 2007 SALMON RUN OUTLOOK



Predicting a Salmon run can be difficult to do since the run is affected by so many different factors. ADFG (Alaska Department of Fish and Game) studies changes in the environment of the rivers, bays, and oceans as well as human factors such as Commercial Fishing, Subsistence fishing, and Sport Fishing to create the rules and regulations protecting the sustainability of the industry. The best way to predict a run is to look at the history of runs and their patterns.

Last Summer saw record runs of Chums and Silvers into the Kuskokwim drainage, as well as a strengthening Sheefish population. The Kings came late but were stronger than 2005 with 3,924 Kings counted in Kogruluk (upriver from the lodge). They have continued to show growing favor to the Holitna River, with their total 2-3 times greater than in the '80s. Because of the strengthening runs, ADFG is considering lifting the 20 year ban on commercial fishing for Kings in the Kuskokwim Bay and drainage. Pinks and Reds were more numerous than usual and greater in size. The Reds, or Sockeye, continue to dumbfound local scientists as to why they are choosing the Holitna to spawn. Some studies suggest they are actually spawning in some of the spring-fed sloughs on the river. Previously it was thought the river didn't match their requirements of lakes in which they prefer to lay their eggs.

With less than 20 Salmon killed at the Holitna River Lodge in 2006, the future looks great on the Holitna. No wonder Alaska Fishing calls the Holitna the "next big thing."

\*www.adfg.ak/us

\*Alaska Fishing. The Ultimate Angler's Guide, 3rd Edition. Compiled by Rene Limeres and Gunnar Pedersen.

### Make Your Voice Heard

Northern Dynasty seeks

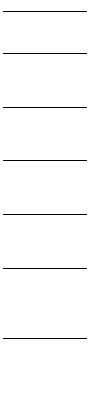
Approval to construct

Mine in headwaters of the Bristol Bay

salmon Rivers!

Visit this link for info!

[Http://renewableresourcescoalition.org](http://renewableresourcescoalition.org)



## LODGE SET TO PARTICIPATE IN STUDY

The discovery of a wood Frog near the homestead cabin has prompted us to participate in the Alaska Wood Frog Monitoring Project. Not previously thought to be in our area, we were encouraged to join the effort designed to assess the Wood Frogs in Alaska. When it comes to this Alaskan Amphibian, there are a lot of unknowns. The study hopes to shed light on where they live and what type of habitat they prefer in order to establish a baseline for future monitoring.

Amphibians are like the canary in the mine: they are excellent indicators of environmental health. They are very sensitive to contamination, pollution, habitat loss, and climate change.

Wood Frogs are fascinating creatures, and the only amphibian in the world found North of the Arctic Circle. In order to survive the Arctic winter, wood frogs freeze solid! It is presumed that they prefer lakes, ponds, bogs, marshes, and temporary pools. Much of the study will be conducted from May through early June, when they are waking from hibernation. \*\*\*\*\*Continued on page 2

### Special points of interest:

- New bathhouse underway!!!
- New Screen porch
- We are adding a black bear/silver salmon combo week in 2008.
- Bob wins PA State Champs in Cyclocross.

# LODGE IMPROVEMENTS 2006-2007

As another summer draws near, we are preparing for a number of improvements at the lodge. The old homestead cabin is going to be the new bathhouse. We are going to lift it up onto a new foundation of stone and crushed gravel. Inside, we have purchased a gas-heated shower and a compost toilet.

The new screen porch will protect you from those feisty Alaskan bugs and allow you to better enjoy the view.

Behind the main cabin, we are creating a fire area, complete with larger fire pit, chairs, cool smoker, and bean hole. The smoker will be located a few feet from the pit, in order to "smoke" and not "cook" the fish.

Down by the river boats, we are putting in a wood railing and steps to aid fishermen when the dirt turns to mud. We are also creating a larger/more comfortable fishing area where guests can get a few extra casts in.

## Appearances:

- \*Harrisburg Sportsmen Show
- \*Alburtis Sports Show
- \*Fishing Tackle Swap & Sportsmen's Flea Market
- At the Se-Wyco Fire House
- \*Klechnersville Sports Show
- \*Paletown Gun Club
- \*Bill Petitt's Fishing Club
- \*Pierson's Plugs
- \*Verge Mid-Atlantic Cyclocross Series.



Future Bathhouse  
Future Bathhouse

# 2007 AVAILABILITY

The following weeks are still available at the 2007 rates.

Pike, Charr, Grayling

June 9—June 16

Kings, Sheefish, Pike, Charr, Grayling

June 23—June 30

Sheefish, Kings, Chums, Sockeye, Pike

July 7—July 14

Chums, Pinks, Kings, Pike, Sheefish

July 21—July 28

Silvers, Pinks, Pike, Charr

August 4—August 11

August 11—August 18

August 18—August 25

Silvers, late Pinks, Pike, Grayling, Charr

August 25—September 1

Late Silvers, Grayling, Charr, Pike

September 1—September 8

"Give a man a fish and he will eat for a day. Teach him how to fish, and he will tell lies the rest of his life."

# CONTINUED FROM LODGE SET TO...

However, in addition to this month of observation, we will be conducting random observations or listening sessions through the summer. Guests are welcome and encouraged to take part in the study. Observational surveys involve listening for Wood Frog "calls" for 3 minutes and filling out data sheets. For more details, visit <http://>

[aknhp.vaa.edu/zoology/zoology-frogs.htm](http://aknhp.vaa.edu/zoology/zoology-frogs.htm). We will also be surveying the bats in our area but do not have any further details at this time.



W  
2007  
P  
800-7-ET-008

# 2008 BEAR HUNT

After much deliberating, we have decided to accept guests interested in taking a black bear. Our reason for deciding to do the hunt is threefold. First, it will bring in more revenue while not raising the fishing pressure. Less fishing pressure=better fishing. Secondly, it makes for a great trip, especially when coupling it with Silver or Grayling fishing. Did you know world record class Grayling are commonly caught in our river in September? Thirdly, culling the bear population will

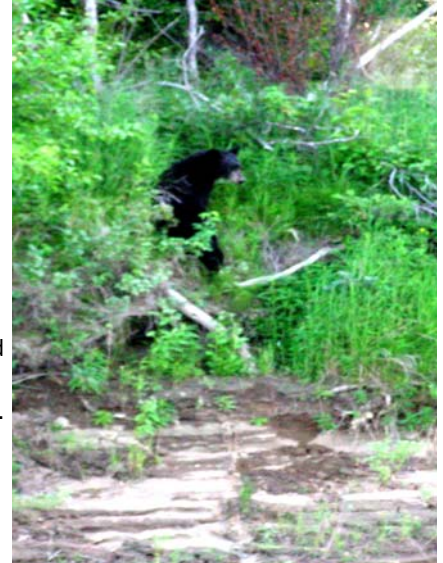
keep *it* under control and healthy and *us* safer.

We will be harvesting a maximum of 3 bears total for the season even though in our area (unit 19A) a hunter may take 3 black bears each. We will be hunting mainly near the lake, especially at the far end, where sightings have been numerous. The terrain of this area would offer an ideal setup for a Black Bear Archery Hunt. We will be shooting some videos of the area this summer so those inter-

ested can see for themselves the quality of their quarry.

A hunter must salvage either the hide or the meat. The lodge will make use of what ever is not salvaged.

The hunt would be an unguided hunt, which is legal for Black Bears but not Browns. Whether you choose archery or rifle, your hunt will be filmed by a cameraman who will also act as a backup gun if needed. The hunts proximity to the lodge will ensure plenty of helpful hands after your successful hunt.



# WOLVERINES

You may have heard stories of these ferocious animals breaking into a goat pen and slaughtering 20 animals within minutes, and yet others confuse them with wolves! Wolverines are most closely related to minks and weasels, only reaching a maximum weight of 55lbs. They are better scavengers than hunters, relying on their cunning brain to break into almost any

structure for an easy meal.

Their large skull and powerful jaw enables them to eat frozen meat and bone. Able to travel 40 miles a day, male wolverines require up to 240 square miles each for their territory. When food is limited, a pregnant female's embryo won't develop. Therefore, when a wolverine is killed, the young will quickly become the new

king of the territory, reaching 90% of its full weight in its very first year of life.

In 2008, we will be offering one Wolverine Hunt. It will be a 7 or 10 day trip. Our guest will be able to harvest a Wolverine, 3 Wolves, and catch many trophy Grayling and Charr.

The trip will be in the early fall, 2008.

**On late  
September  
afternoons, after  
months of  
fasting, Sheefish  
spawn on the  
surface of the  
water, often  
launching their  
eggs into the air!**

# SMALL GAME/TROPHY CHARR & GRAYLING

As if you needed one more excuse to go exploring some of the most beautiful terrain in the world, here it is: September in Alaska is beautiful. It is this brief time, after the summer bugs and before winter bites down, when Alaska shines.

Why go all the way to Alaska to go fishing???

How about because it is some of the best fishing in the world in one of the most beautiful places in the world. And now we can do you one better.

We are offering one Combo Small Game Hunt/Trophy&Charr fishing trip. The trip would be a 7 or 10 day adventure, where one could harvest Ptarmigan,

grouse, hares, and squirrels. Had enough walking? Head to the river!

The Charr and Grayling have moved down into the main river, and are fat from feasting on the decaying flesh of the Salmon. They also feed eagerly as they know winter is approaching.

Trip will be in early fall, 2008.



Arctic Grayling

## Holitna River Lodge, LLC.

223 Main Street, APT 1  
Schwenksville, PA 19473

Phone: 610-287-2037  
Email: cadence02@netzero.com  
website: www.holitnariverlodge.com

## Alaska's Premier Remote Adventure Lodge

# OUR VISION

Kristin and I started our business in the most remote and best fishing area we could find. Our goal was to create a sustainable fishing/hunting/adventure lodge which would benefit the environment as much as it would us and our guests. I guess I never forgot the Boy Scout motto, "leave it better than you found it."

We don't always do things the easy way. We don't operate an airport at our lodge, and we don't have a parking garage for ATVs and snow mobiles. We keep engines to a minimum, and we are rewarded everyday by what we see from our windows. Almost every animal we list on our website can be seen from our door. You won't find any "dead zone" around our lodge.

We attempt to recreate those fishing and hunting trips from our past. None of my memories are related to technology. I remember my first deer, my first fish, the first time a grouse almost made me wet my pants. I remember seeing two giant bucks fighting it out on an autumn day. I remember the warmth of the sun after a cold morning on stand. I remember the day a black bear climbed into my tree stand. I remember floating a creek into a river and wondering with the same spirit Huck Finn must have felt if I could make it to the ocean.

We want you to remember the experience, the adventure, and those who shared it with you.

[WWW.HOLITNARIVERLODGE.COM](http://WWW.HOLITNARIVERLODGE.COM)



Bob places 1st at the PA State Cyclocross Championship Race held at the fairgrounds in Carlisle.

## BOB WINS PA STATES

3 seasons ago I was 30 seconds into an Elite Mountain Bike Race in Ringewood Park in North Jersey when I felt pain in my knee. I slipped on a patch of ice and dabbled with my leg, maybe a little too hard. I decided to drop out of the race but didn't think it was severe. But the next day, as I was jogging down the Perkiomen Trail, my leg completely gave out and Kristin had to pick me up in the car. After a few examinations, doctors realized I had actually fractured my femur in what they called a spiral fracture. Fortunately, they didn't need to reset it, and I was eager to heal. In less than a month, I was back on the bike, and a month later, back to racing. I

thought.

2 bad races into my comeback, a setback. I spent a month training hard to return to my previous form, but to no avail. I spent two more months of careful training, slowly upping my efforts before finally racing again. Once again, two races in, my leg gave out. Feeling that I was letting my team and sponsors down, I decided to not race anymore.

After a few months of doing nothing, I came up with a new goal. I wanted to be able to ride 30 minutes a day without pain to stay in shape. After riding 6 hours a day for years this almost seemed a waste of time. For 12 months

I stuck with it. Then, I decided to start my own cycling team sponsored by the Holitna River Lodge. We seek young riders with bright futures!!! And one old rider...me. My 30 minute rides became one hour of all out power rides.

I became curious of how I would fare in a cycling sport where the races were only one hour long. To my surprise, I did pretty well. The sport is cyclocross, and the season runs from October through December (perfect timing for this fishing guide!)

In my first season I managed to snag the Championship for Pennsylvania Cyclocross. Yep, I think I'll keep riding!